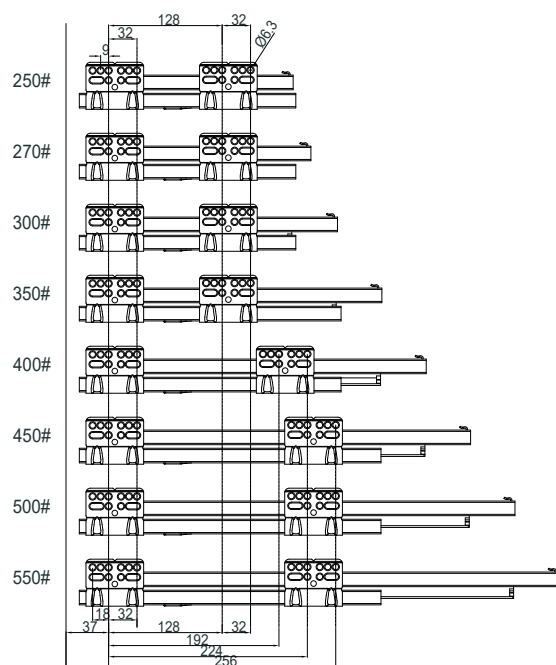
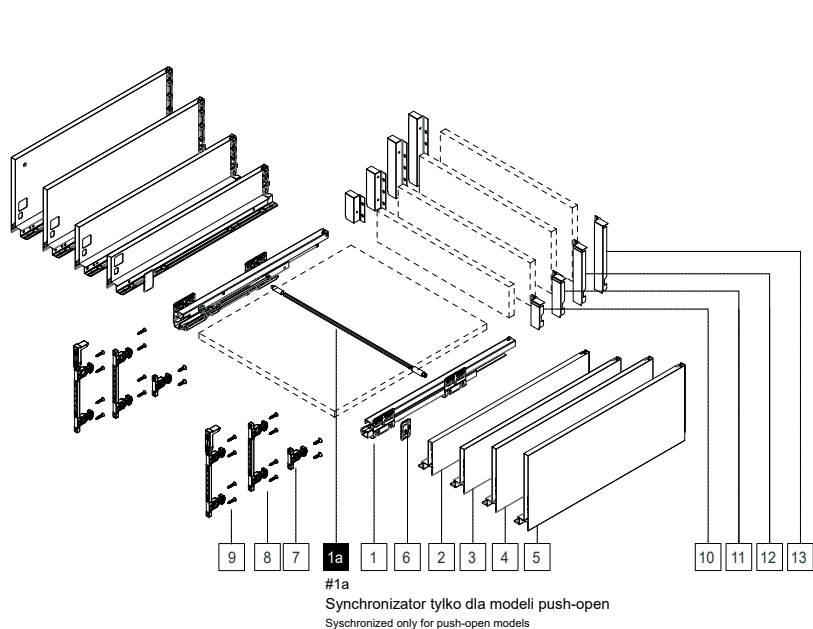
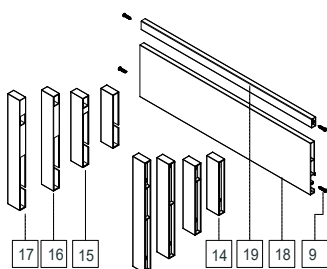


Wymiary montażowe dla szuflad wewnętrznych | Installation dimensions for internal drawers

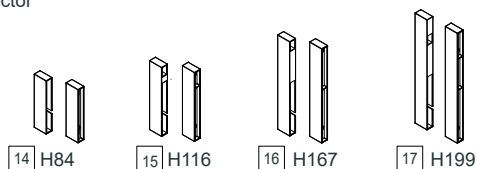


Opcjonalnie dostępne | Additional Purchase Required

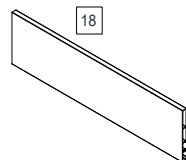
Panel frontowy szuflad wewnętrznych Inner Drawer Panel Accessories



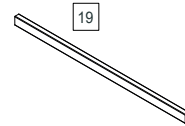
Mocowanie frontu Front Connector



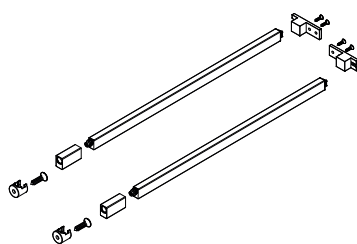
Panel frontu Front Panel



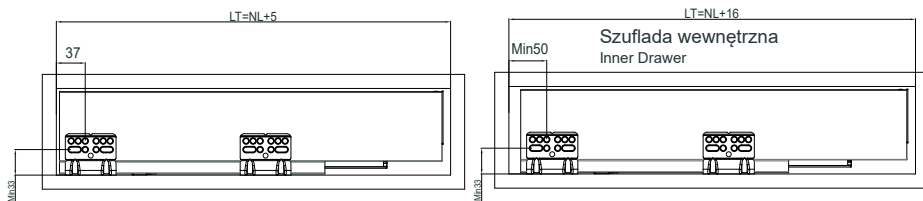
Reling kwadratowy Square Railing



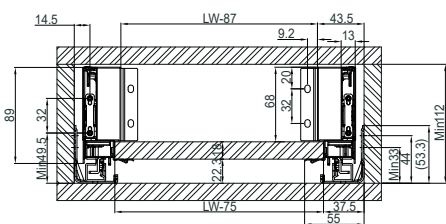
Relingi boczne Side Panel Railing



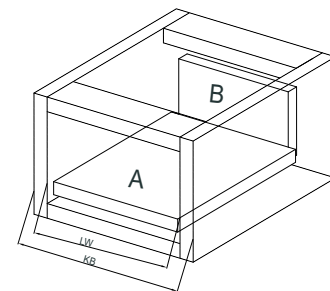
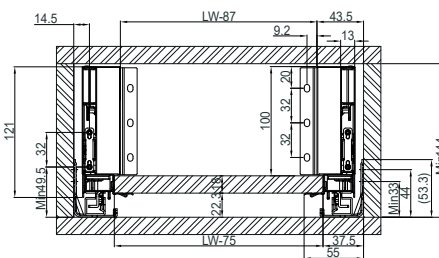
1. Rozmiar szafki | Cabinet Size



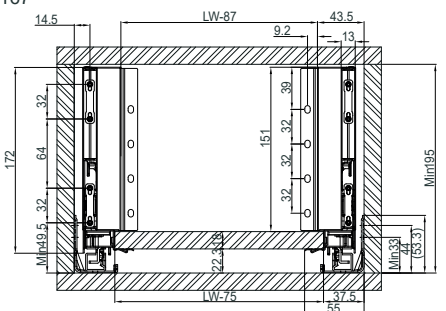
H84



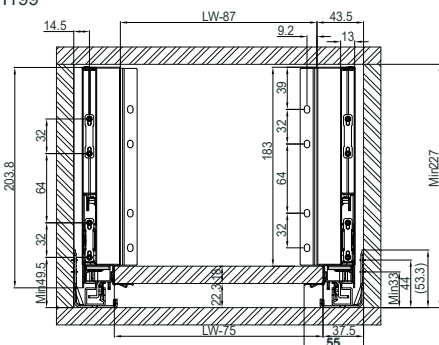
H116



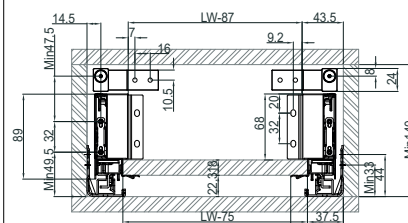
H167



H199

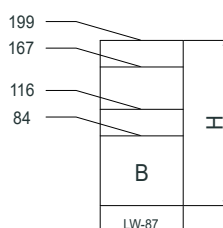


H84 + Relingi kwadratowe |+ Square Railing

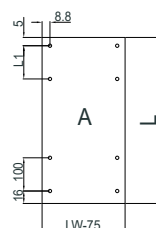


2. Wymiary cięcia płyty | Material Cutting Dimensions

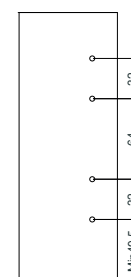
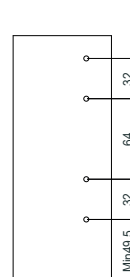
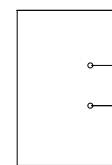
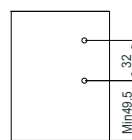
Panel tylny
Back Panel



Panel dolny
Bottom Panel



Panel frontu
Front Panel



L=NL-26

H84

H116

H167

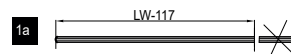
H199

Wysokość
Height

	8	11	16	19
H(mm)	4	6	7	9
	8	11	16	19
	4	6	7	9

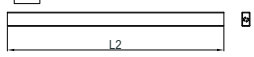
NL	250	270	300	350	400	450	500	550
L1(mm)	0	0	0	95	95	95	95	95

Synchronizator Push-open
Push-open Synchronized Rob



** Front wewnętrzny | Inner Drawer Front Panel

19 05B.023-J

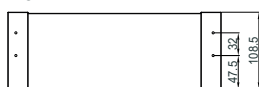


18 05B.023-FB

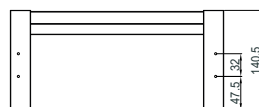


L2=LW-37

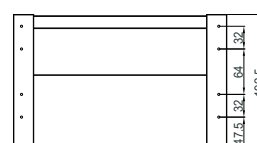
H84



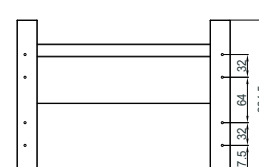
H116



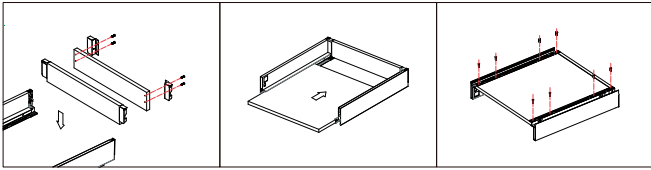
H167



H199

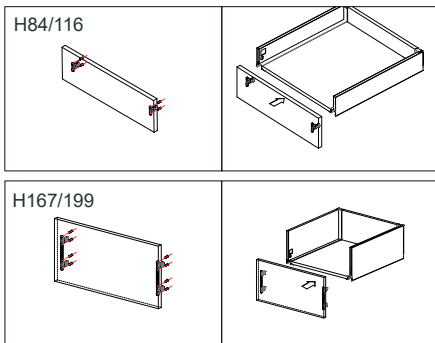


1: Montaż ścianki tylnej i dna | Installation Back and Bottom Panel

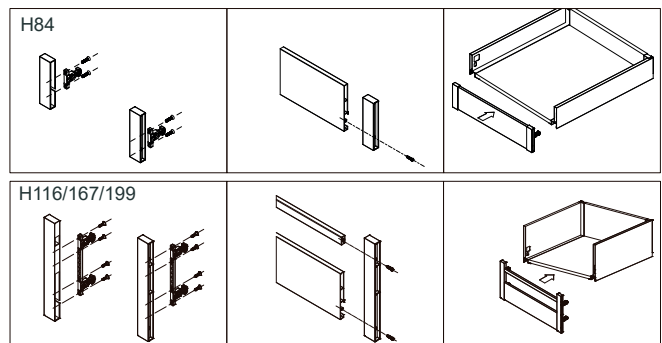


2: Montaż frontu | Installation Front Panel

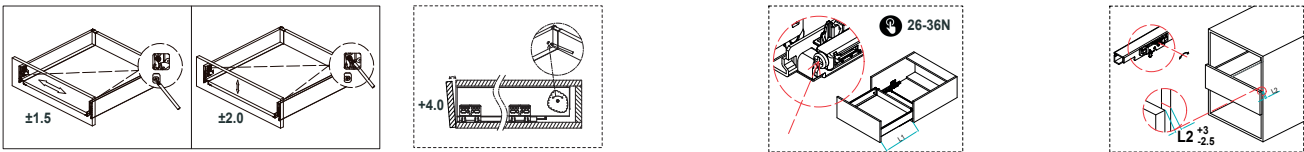
Front z płyty | Wood Front Panel



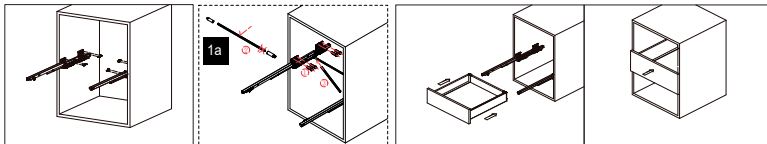
Szufłada wewnętrzna | Inner Drawer



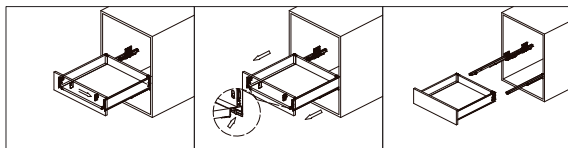
3: Regulacja | Adjustment



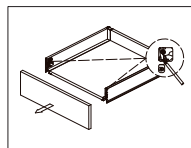
4: Montaż prowadnicy i szufłady w szafce | Installation Slide and Drawer into Cabinet



5: Demontaż szufłady | Drawer Disassembly

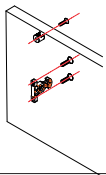


6: Demontaż panelu przedniego | Front Panel Disassembly

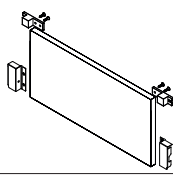


7: Opcjonalnie reling boczny | Railing for Side Panel if necessary

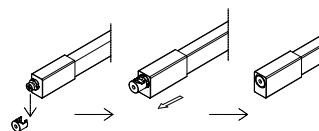
Montaż zaczepów przednich
Install The Front Connectors



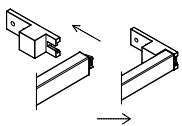
Montaż zaczepów tylnych
Install The Back Connectors



Montaż przedniej zatyczki
Install The Front Plug of Railing



Montaż tylnej zatyczki
Install The Back Plug of Railing



Demontaż
Disassembly

